

## NEWSLETTER WEEK 4, TERM 2



Kia ora koutou katoa,



### CONGRATULATIONS

Last Friday staff had the pleasure of adorning Angela with our school korowai to ensure she carried the kura with her as she was presented with the Queens' medal and made a Member of the New Zealand Order of Merit for services to education at the Government house in Auckland. We are all so very proud of Whaea Angela.

Ngā mihi  
Murupara Area School

## IMPORTANT INFO

### School Term Dates 2022

Term 1 1<sup>st</sup> Feb – 14<sup>th</sup> April

Term 2 2<sup>nd</sup> May – 8<sup>th</sup> July

Term 3 25<sup>th</sup> July – 30<sup>th</sup> Sep

Term 4 17<sup>th</sup> Oct – 13<sup>TH</sup> Dec

2nd June - Toi Ohomai Open Day

23rd May - June 3rd - Life Education

6th June - Queens Birthday

13th - 17th June - Service Academy  
Bushcraft Trip

14th June - School Photos

15th June - Blue Light Road Show

23rd June - School Matariki Celebration

24th June - Matariki (SCHOOL  
CLOSED)

July 5th– Taura Whakamana Y1-Y10

PH: 07 3665 602

EMAIL: [office@mas.school.nz](mailto:office@mas.school.nz)

Please contact us with any  
enquiries and if your child will  
be absent.

# OFFICE NOTICEBOARD

Tēnā koutou katoa,

I hope term two is serving everyone well and people are finding comfort in less restrictions and more normality.

This term's focus is on handwashing and flu season. I know handwashing may seem like a bit of a "mundane" theme as we have been preached this over and over as a covid-19 preventative.

However, it is one that is just so effective at reducing the spread of all kinds of viral and bacterial illnesses.

We need to be washing our hands with soap for 20-30 seconds and thoroughly dry them or use hand sanitiser and rub hands together until dry. The soap option is far better if you can see dirt or sediment on your hands.

## When should we wash our hands?

Before eating or preparing food.

After sneezing, coughing, or blowing your nose (or wiping children's noses), gardening or playing outside, contact with animals, going to the toilet or changing nappies, looking after sick people.

**As it is getting colder, influenza (the flu) is more prevalent.** There are many theories behind this including:

People being inside more- having more opportunities for flu to spread

Less sunshine (less vitamin D) means we have lowered immune systems

Colder air restricts the blood vessels in our noses, affecting our natural immune defence in our noses.

Cold air carries less moisture – all the water goes onto our grass, "dewy windows" or other surfaces, leaving the air drier. Drier air causes flu to spread more.

There are a few things we can do to prevent our whanau getting the flu this winter. We can wash our hands regularly to help stop the spread. We can keep surfaces in our houses clean daily (using disinfectant sprays) and wash bedding regularly. We can let our skin absorb some vitamin D from the sun for 30mins per day in winter. We can eat plenty of fruits and vegetables to keep our immune systems healthy. We can also get the flu vaccine if we choose to do so. This is FREE for Maori and Pacific Peoples 55yrs + or other ethnicities 65yrs+. This is also free for hapu wahine and for some others with certain health conditions. Please enquire at your GP.

The fit and healthy may survive the flu but, like covid, our elderly and vulnerable whanau may not, so all these things are important to implement into our lives to help to combat the flu season.

Nga Mihi,

Jessika Saunders

Public Health Nurse

Community Health 4 Kids | Bay of Plenty DHB  
ddi: +64 7 306 3068 | ext: 4568 | Mobile: 027  
2539467

Whakatane Hospital | PO Box 241 | Wha-  
katane 3158, New Zealand



# OFFICE NOTICEBOARD

Kia Ora Whanau,

For our tamariki with asthma it's really important that we have a good plan in place incase they get sick. I encourage the tamariki and their parents/caregivers to come and visit me in the nurses clinic on a Monday or a Tuesday. We can talk about their asthma, medications and what to do if they become unwell. I can help develop a care plan and provide education to ensure that the tamariki stay well over the winter months.

Nga Mihi,

**Caroline Davies**

**School Nurse**

## RHEUMATIC FEVER



My name is Tania Gavigan-Kohunui decedent from Tuhoe and Te Whanau-Apanui. I am the newest member for Rheumatic Fever working alongside Adrianna Jenner decedent of Tuhoe, Ngati Manawa and Te Arawa. Our mahi involve working in schools doing Rheumatic Fever Swabs with the tamariki to help prevent Rheumatic Fever affecting them, as well as their whanau. We are currently working with all 6 schools in our Rohe, they are Te Kura Kaupapa Motuhake o Tawhiuau, Murupara Area, Kaingaroa Forest, Te Whaiti, Huairau and Galatea.

Over the past two years our Rohe was the highest affected with Strep A and Rheumatic Fever cases. With the Rheumatic Team going into schools and working with our communities has help decrease our case numbers in both Strep A and Rheumatic Fever. In saying that, we are now one of the lowest affected areas.

To help prevent this from happening again, we are starting back in schools as of next week to educate the tamariki about the importance of Rheumatic Fever and the effects it could have on them and their whanau.

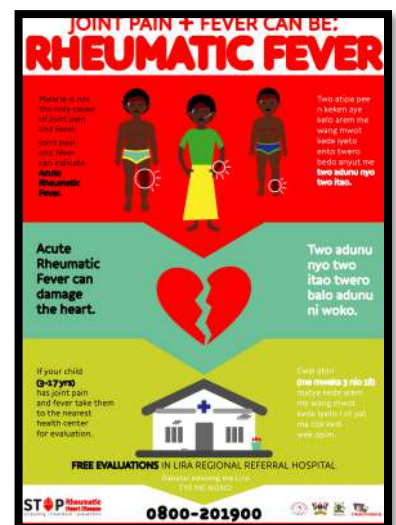
Our first promotional activity will be a Colouring in Competition (SUPERKID – “Stop sore throats hurting hearts”).

Our prevention keys are:

- \*Always wash your hands
- \*Never share your food and drinks
- \*When you cough, and sneeze do the DABB!

Nga Mihi,

**Tania Gavigan-Kohunui and Adrianna Jenner**





# NĪOREORE PĀNUI

## Nau mai,Tauti mai!

Kia Ora Whanau



I am delighted to be back in Murupara after 10 years teaching at Reporoa Primary School. I live in Kaingaroa and initially trained with Jude Robinson for 3 years while studying at Waikato University.

I am teaching our Year 2 students and am thrilled to be working alongside Whaea Jo, and Whaea Marie together with our awesome teaching aide staff in the Nīoreore Junior Hub to give your children the best start possible. I love teaching and am learning all about your tamariki. You are always welcome to come and see me and are warmly invited to drop by and say hello. I am looking forward to meeting many of you at our Community Matariki Celebration on the 23rd June.

Nga Mihi Mahana

**Whaea Susannah**

**Tauira Hōu**

We would like to extend a warm welcome to our new students and their whānau that have started at Murupara Area School since the beginning of Term 2. Ngā mihi to Esther Ake, Porsha Miki, Tiara-Huiarangi Tai Rapana, Jacques Isaac and Gisaliyah Manihera. Nau mai, whakatau mai ra tamariki mā.



**Hui Whakanui**

Every week we have lots to celebrate, but everything we do is always wrapped around our Uara. Every even week we recognise those who have stood out in regards to consistently displaying and modeling one, some or all of our Uara which are: Manaakitanga, Kaitiakitanga, Akoranga, Whakapono, Tūmanako, Whanaungatanga and Kōtahitanga. These students are recognised by receiving tohu/certificates. Every other week (odd weeks) we have an Uara Draw. Any tamaiti caught displaying any of our uara will be placed into our Uara draw which are placed in both Nioreore areas. Two draws will be drawn from both hubs and prizes are given out. There is no limit to the number of entries one can have, this is to promote our Uara as much as we can and for our tamariki to be naturally displaying these values all day every day.

So I would like to congratulate the following students for consistently modeling our Uara: Noah (yr6), Rhianna (yr6), Dolly (yr6), Ngahuia (yr6), Hinepipiri (yr5), Rahiri (yr5), Daenah (yr5), Arai (yr4), Ryan (yr4), Manuruhi (yr3), Maximus (yr2), and Tea (yr1) and our Uara Draw winners last week were Ambah-Rose (yr5) and Calvin Takuira (yr6) Nui te mihi ki a koutou katoa.





## KĀRANGARANGA PĀNUI

Kia ora e te whānau,

Kārangaranga kaiako will be sending homework home that may consist of reading, math or researching a project.

Not only is the learning a focus here but a big emphasis is on students self managing there time to complete given tasks. The homework tasks will cover what students are learning in class.

We appreciate all support from whānau.

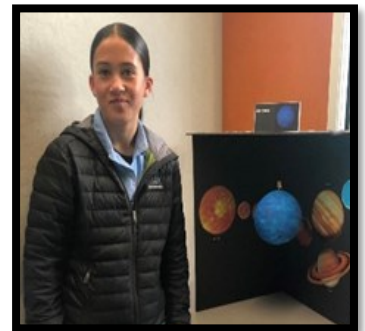


Year 7 Science class with Matua Muriwai – We are learning about the components of the solar system.

Students will research a planet of their choice.

This is a home work project due this Friday!

Last term our haerenga around the rohe was not



completed due to weather conditions. We will still complete the second day of this later in term 3.



Well focused our year 9 taura!



# **RANGIPŌ/SERVICE ACADEMY PĀNUI**

## **Rangipō Hub Week 4**

### **Hub Focus - ATTENDANCE**

For the past 4 weeks we have been focussing on ATTENDANCE, students coming to school and staying for the whole day because we know from our data that students with good attendance in the majority of cases translates to ACADEN-IC ACHIEVEMENT. Covid aside it is time for students to return fully to school. We appreciate all the support we get from whanau in this area.

It has been a super busy week for us in Rangipō Hub. We continue to work on gaining achievement through credits and assignments.

### **Trades**

We now have 7 students on trades covering subjects from Agriculture to Cookery and Mechanical Engineering to Game and Online Design. They are out from Tuesday to Friday and will earn from 21 – 32 credits. Awesome mahi koutou!

### **Reports**

These went out last week but if you did not receive your child's report please contact the school office and leave a message for Mrs Hingston or myself to get a copy to you.

### **Tauira Whakamura**

This hui was held on Tuesday 24th May 2022 and we congratulate and thank the parents and caregivers who came up to meet with teachers.

We took the opportunity to talk about

### **ATTENDANCE**

#### **Academic achievement**

Gain feedback on strategies from caregivers and students to address poor attendance.

We have taken onboard the suggestions from caregivers and students but also need them to work and try harder to overcome barriers to attending school.

### **Careers EOTC**

Yr 12/13 and some Yr 10 students travelled to Rotorua to the Careers Expo. This will be a good day for students to find information about the possible careers they plan for themselves. Mrs F Hewett and Mr T TeAho are in charge.

Only students with attendance of 85% or more are able to go.

### **Enviro L1/2/3**

Travelled to Kaingaroa Forest to gather information for their assessment on The Carbonization Process and its effect on climate change. Was a great trip and students did well to collect the evidence they needed.

### **Upcoming dates/events to remember:**

**Basketball – Thursday and Friday.**

**Touch team – looking for a coach**

**Volleyball Team – Looking for drivers.**

If you are able to help in these areas naumai haeremai ki MAS ki awahi ai.

**Na**

**Mrs T Teddy**

**Hub Leader**



# RANGIPŌ / SERVICE ACADEMY PĀNUI

## Basic Leaders Course 2022



On Sunday the 8th of May, five students in the Service Academy travelled to Ohakea Air Force Base, for a five day Basic Leaders Course. There were students who were noticed at Induction for their leading skills from the NZDF Staff and were put forward to attend this course. We were lucky that our academy only had 5 students so everyone was able to attend. Over the 5 day course we had lessons on different types of leadership and the qualities one should have to become a great leader. On Wednesday we were split into sections which had one student from each school. Each section was assigned to six tasks around the base. During these tasks we were allocated time to take charge of our sections, the task and to put into practice the skills we learnt from the lessons earlier in the week. These included types of leadership you can use depending on the task, which included taking and marching fellow trainees to and from the different tasks, giving instructions and taking on the advice of others in the group to get the task completed to a high standard. Overall our week away at Basic Leaders was well worth it. There were many points to take away and work on while at school and to be the leaders we know we can be and are learning to be.

This is only one of the many courses we the Service Academy students attend throughout the year. This course is in preparation for Bushcraft and to return to school to teach and be leaders within our school environment.

**Na Te Aomihia Reedy & Hunter Mellon**

## **Cookery Toi Ohomai**

I had the opportunity to visit Peata and Raven at Toi Ohomai Trades in Cookery. Under the careful eye of Chef Dave Collier-Baker they show great skills and knowledge in cooking. They are seen here cooking Moroccan Beef on Rice. Nga Mihi korua, you are great chefs in the making.



**Nga Mihi,  
Whaea Connie**